



# **WEST STREAM** 2550 DWT Product/Chemical and Oil Carrier



## **Contacts**

### **Vestland Marine**

Slaska str. 23/25  
81319 Gdynia  
Poland

Telephone +48 58 6994500  
Telefax +48 58 6994501

E-mail: [post@vestland.marine.pl](mailto:post@vestland.marine.pl)



# WEST STREAM 2550 DWT Product/Chemical and Oil Carrier

<b>General description</b>			<b>Classification</b>	<b>Propulsion machinery</b>
The vessel has been constructed for the carriage of IMO class III and petroleum products. Four cargo segregations and four cross-over lines.			Det Norske Veritas +IA1 TANKER FOR CHEMICALS AND OIL PRODUCTS ESP ICE-C E0	One NORMO type KVM-12, 4-STROKE,12 CYL. Marine Diesel Engine, 2250 BHP at 750 rpm, bore 250mm,stroke 300mm
<b>Main particulars</b>			<b>Flag</b>	<b>Auxiliary machinery</b>
Length O.A.		80.20 m	Bahamas	Three Volvo Penta Type TAMD 120 BHP at 1500RPM
Length B.P.		74.90 m		
Breadth moulded		13.00 m	<b>Builders</b>	<b>Bow thruster</b>
Depth moulded		m	Bolsones Shipyard, Norway	
Draught on summer freeboard		5.843 m	<b>Built</b>	
Corresponding deadweight		3193.3 mt	1979	
Distance keel/top antenna		29.1 m	07.12.2005 Converted to double hull tanker at Naval Shipyard Gdynia Poland	One BRUNVOLL-type S.P.K.-250. diam.1200mm; 1250rpm; hydraulically driven
<b>Reg tonnage</b>			<b>Speed and consumption</b>	
International	Gross	Net	Fuel oil consumption of the Main Engine about 6.1 mt/day.	
Panama	1,845.00	696.00		
Suez				

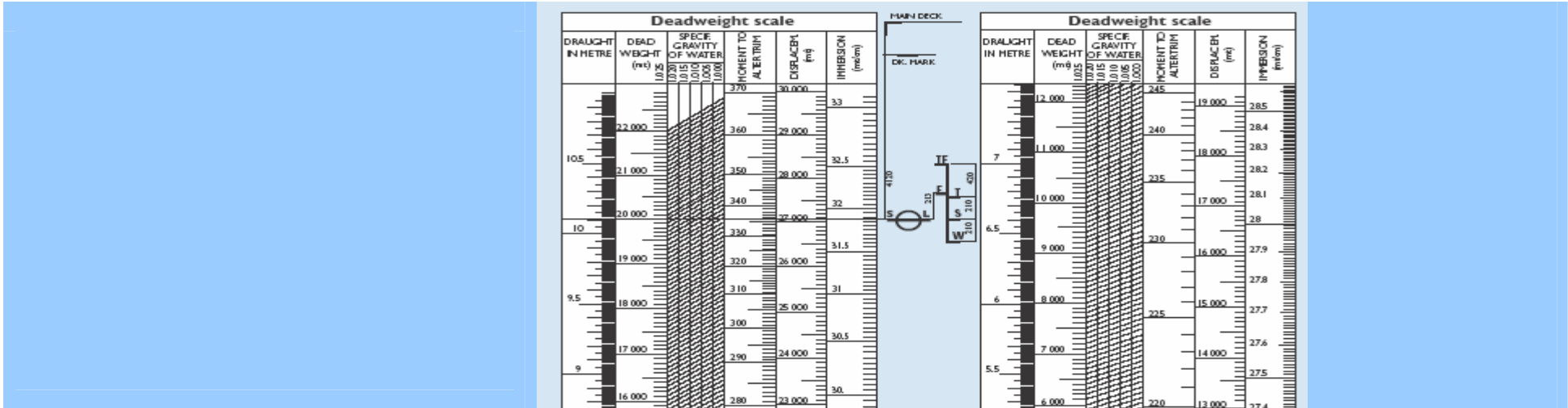


# WEST STREAM 2550 DWT Product/Chemical and Oil Carrier

Fuel oil/Diesel oil/Ballast water capacities		Tank cleaning equipment			
Fuel oil	180.5 m <sup>3</sup>	Twenty four (two in each tank)fixed tank washing machines Toftejord type T 67XPW/2x8mm nozzles capacity 14.5 m <sup>3</sup> /h Twelve (one in 2,3,4,6PS and SB and two in 1PS/SB) fixed tank washing machines Toftejord type T 67XPW/2x6mm nozzles , capacity 9.0m <sup>3</sup> /h Two tank cleaning pump Framo hydr. Driven type 4VF-2; cap 100m <sup>3</sup> /h	Fore peak	92.6	
Ballast water	780.4 m <sup>3</sup>		Water ballast tank 1 DB	174.6	
			Water ballast tank 2 DB	132.1	
			Water ballast tank 3 DB	135	
			Water ballast tank 4 DB	84.1	
			Water ballast tank 5 DB	80.1	
			<u>Water ballast tank 6 DB</u>	<u>81.9</u>	
			<b>Total</b>	<b>780.4</b>	
Cargo equipment		Cargo tanks			
<ul style="list-style-type: none"> <li>12 coated mild steel cargo tanks with double bottom and sides.</li> <li>Two slop tanks</li> <li>Twelve cargo pumps hydraulic driven FRAMO type submerged SDS 4 cap. 80 m<sup>3</sup>/h head 90 mwc</li> <li>One portable cargo pump hydraulic driven FRAMO type TK4 cap.70m<sup>3</sup>/H -70M</li> <li>One slop pump Leistritz screw type LA 126/120 cap. 175 m<sup>3</sup>/h</li> </ul>		Tank capacities	Volume m3 (98 %)		
		Cargo tank 1 SB	154.06		
		Cargo tank 1 PS	154.06		
		Cargo tank 2 SB	216.09		
		Cargo tank 2 PS	216.09		
		Cargo tank 3 SB	206.76		
		Cargo tank 3 PS	206.76		
		Cargo tank 4 SB	208.11		
		Cargo tank 4 PS	208.11		
		Cargo tank 5 SB	177.73		
	Cargo tank 5 PS	177.73			
	Cargo tank 6 SB	193.91			
	<u>Cargo tank 6 PS</u>	<u>193.91</u>			
	<b>Total</b>	<b>2,313.32</b>			
				<b>Volume m<sup>3</sup>( 98%)</b>	
			Slop tank SB	37.34	
			<u>Slop tank P</u>	<u>37.34</u>	
			<b>Total</b>	<b>74.68</b>	
			<b>Grand total (Cargo&amp;Slop Tanks)</b>	<b>2,388.00</b>	
Cargo heating					
All cargo tanks, slop tanks included are fitted with heating coils. The cargo heating system consists of primary ( 2 steam boilers type Clayton type EO 125 Marine cap. 2109 mcal/h) and secondary steam system.					

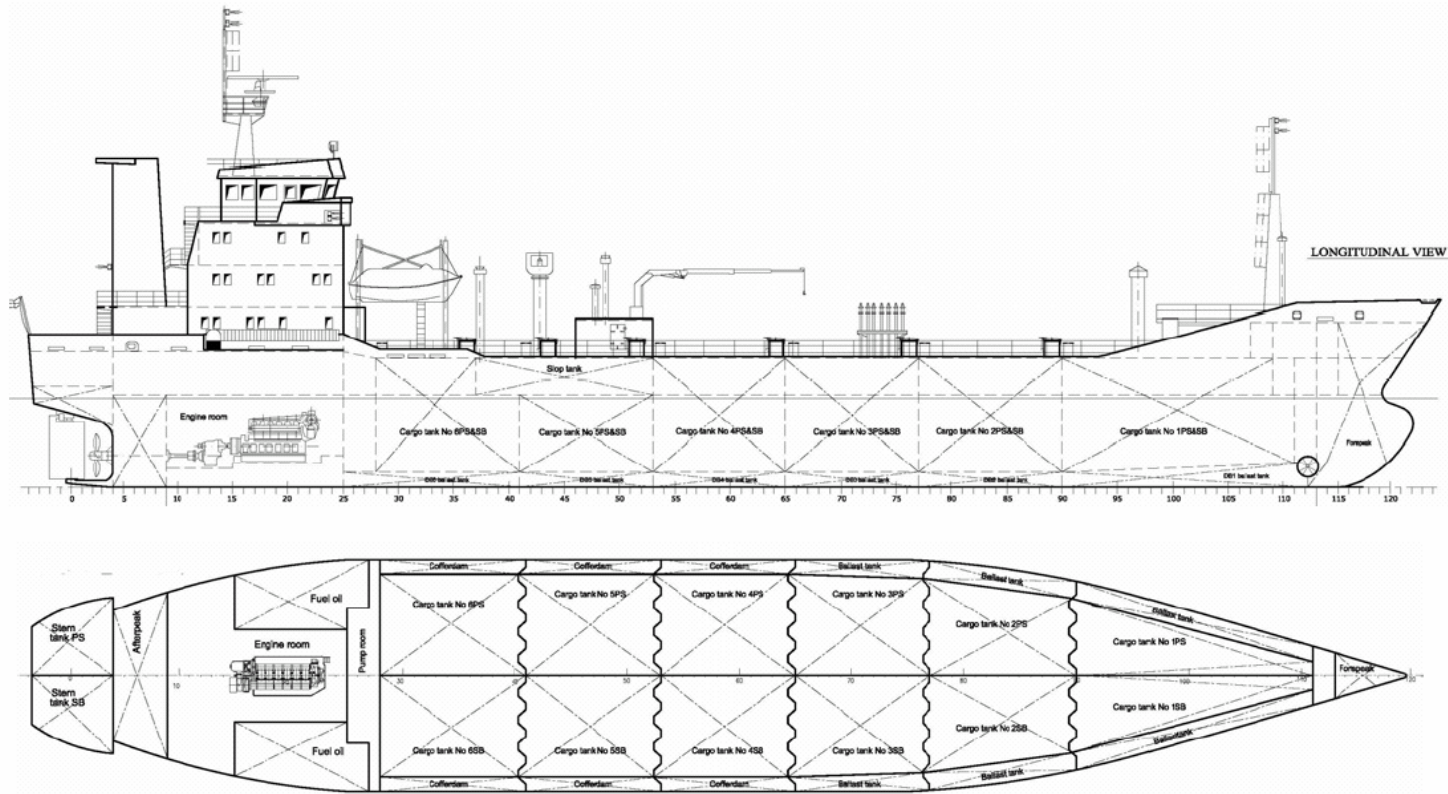


# WEST STREAM 2550 DWT Product/Chemical and Oil Carrier





# WEST STREAM 2550 DWT Product/Chemical and Oil Carrier



This publication is designed to provide as accurate information in respect of the subjects covered as was available at the time of writing. However, this publication deals with complicated matters and the information provided in this publication may be subject to improvements, modifications and changes. Consequently the publisher and copyright owner of this publication do not take any responsibility or liability for any errors or omissions this publication may have, or for discrepancies arising from the features of any actual item being different from those shown in this publication. The publisher and copyright owner shall not be liable under any circumstances for any damages, whether direct or indirect, financial or otherwise, suffered by any party arising out of, connected with, or resulting from the use of this publication or the information contained therein.